

01M5RB
COUNTERBALANCED 360° SWIVEL CRANE
WITH LIGHTWEIGHT REMOVABLE WEIGHTS AND FOLDABLE MAST



Thanks to its unique features it is a crane that offers an extreme portability and is therefore the most suitable solution for construction sites. It can be lifted by construction site cranes and be transported on freight elevators. The best crane for rooftop lifting projects thanks to :

- REMOVABLE WEIGHTS (WEIGHT OF THE CRANE WITHOUTS BALLASTS ONLY 250 KG ✓
- FOLDS DOWN FOR EASY TRANSPORTATION - MINIMUM HEIGHT LOWER THAN 1200 MM ✓
- REMOVABLE PUSH HANDLE ✓
- CAN BE TRANSPORTED BY FORKLIFT ✓
- SUPER-ELASTIC WHEELS FOR THE BEST OPERATIONAL PERFORMANCES ✓

01M5RB is a counterbalanced 360° swivel cranes with manual push/pull , **with a maximum capacity up to 500 kg and outreach up to 1300 mm**. It represents the best solution for lifting and transporting loads in the most varied applications. Thanks to its very compact dimensions, it can be easily maneuvered even when fully loaded without efforts in confined spaces.. All components are made in Italy to ensure the highest construction quality and the absence of defects.

The hydraulic system is equipped with a lock valve that prevents the load from falling in case of accidental breakage of the pipes and a rough valve that prevents overloading of the crane.

They are equipped with 2 high-capacity pivoting wheels with bumper mounts and parking brakes and with 2 fixed front wheels with bearings. The frame is made of painted steel and is equipped at the base with 2 useful forklift supports (to lift and transport the crane in complete safety on long distances. The sturdy push handle can be disassembled. There are also 2 handles to easily rotate the ballast. Swivel hook type. Rotating Jib arm with 8 locking positions.

Technical data	UM	01M5RB
Weight	[kg]	528
Max capacity	[kg]	500
Max pressure	[bar]	140
Tank capacity	[Liters]	2
Cylinder stroke	[mm]	470

CERTIFICATION AND COMPLIANCE WITH REGULATIONS FOR THE PROTECTION AND SAFETY AT THE WORKPLACE

The model 01M2 model being a crane with manual lifting does not require a third-party certification according to current legislation or obligation of periodic checks.

01M5RB

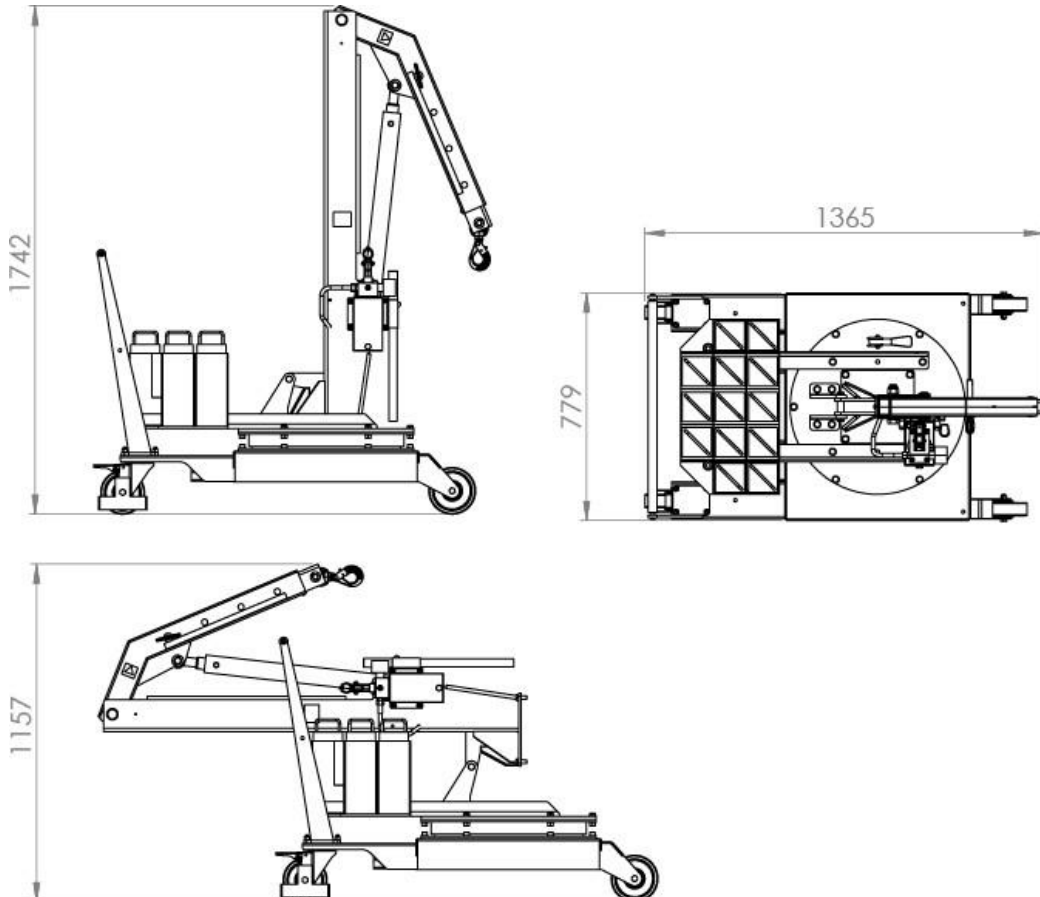
CAPACITY 500 KG

COUNTERBALANCED SWIVEL CRANE HYDRAULIC LEVER
CONTROLLED FAST LIFT DOUBLE ACTION PUMP – FINE CONTROL
DESCENT KNOB WITH ADJUSTABLE SPEED

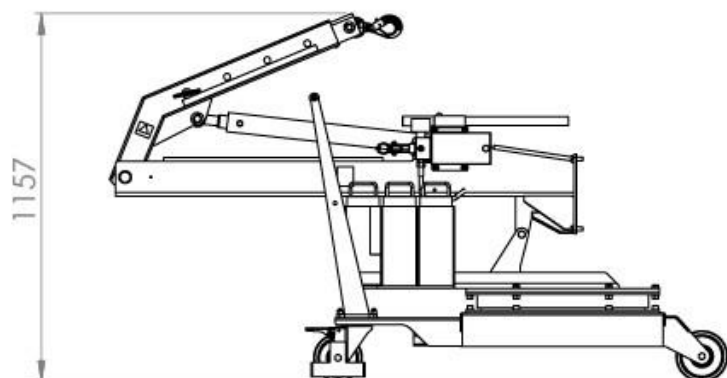
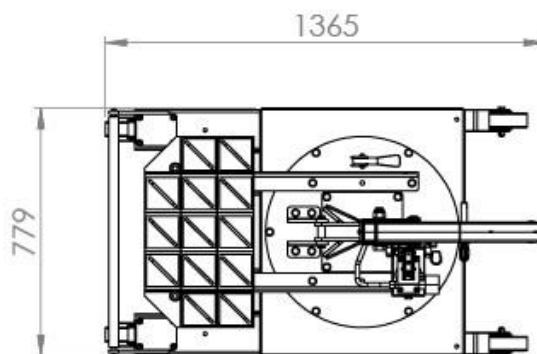
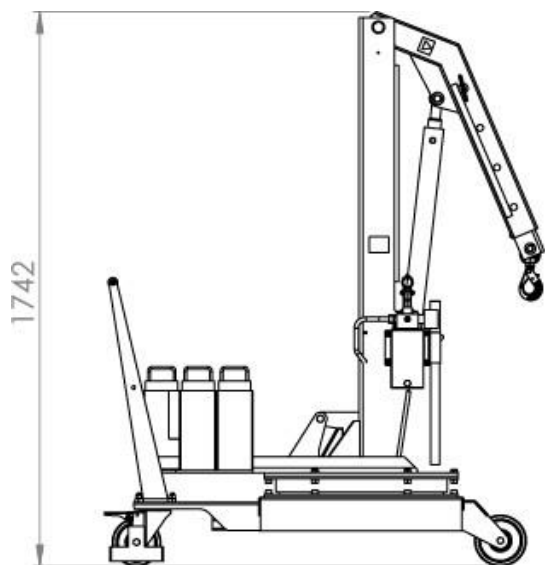
FOLDS DOWN FOR EASY TRANSPORTATION
MINIMUM HEIGHT LOWER THAN 1200 MM



The crane 01M5RB is equipped with a lever controlled fast and lightweight lift double action pump . The control descent knob make it possible to adjust the descent speed. The arm is extendable in 4 positions and an optional arm extension is available to get a maximum outreach of 1270 mm. Flexible, safe, reliable and ergonomic for the maximum protection of workers.

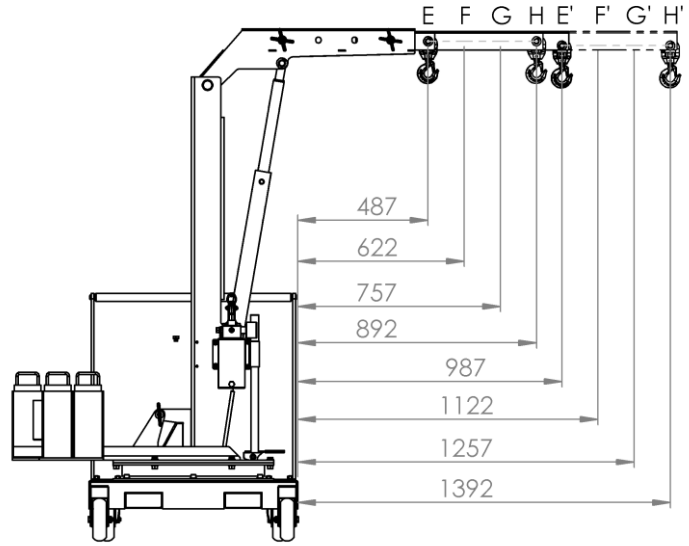
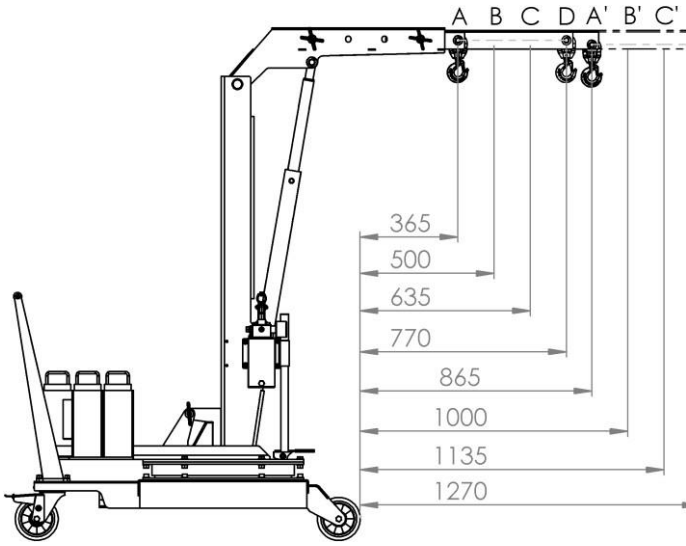


01M5RB
DIMENSIONS
COUNTERBALANCED SWIVEL CRANE HYDRAULIC LEVER CONTROLLED FAST
LIFT DOUBLE ACTION PUMP – FINE CONTROL DESCENT KNOB WITH
ADJUSTABLE SPEED



01M5RB

LOAD CHART AND EXTENSION FEATURES AN ESSENTIAL CRANE IN EVERY CONSTRUCTION SITE



	A	B	C	D	A'	B'	C'	D'
FRONT OVERHANG (mm)	365	500	635	770	865	1000	1135	1270

	E	F	G	H	E'	F'	G'	H'
LATERAL OVERHANG (mm)	487	622	757	892	987	1122	1254	1389

LOAD CHART

ARM POSITION	FRONT CAPACITY KG				LATERAL CAPACITY KG			
	A/A'	B/B'	C/C'	D/D'	E/E'	F/F'	G/G'	H/H'
100% EQUIPPED WITH ALL WEIGHTS	500	420	370	320	300	252	222	192
	220	200	180	160	132	120	108	96
60% WITHOUT THE 5 WEIGHTS NEAR THE MAST	400	336	296	256	240	201	178	153
	176	160	144	128	105	96	86	77
0% WITHOUT ANY WEIGHT	140	118	104	90	84	70	62	54
	75	68	60	50	45	39	36	30