

CRANE GZ1000BSE

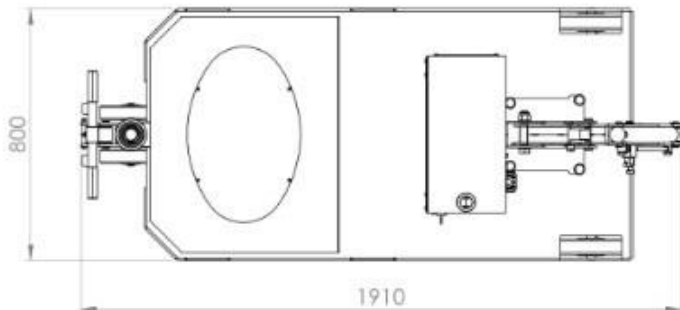
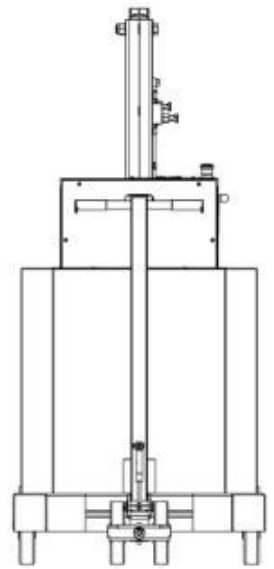
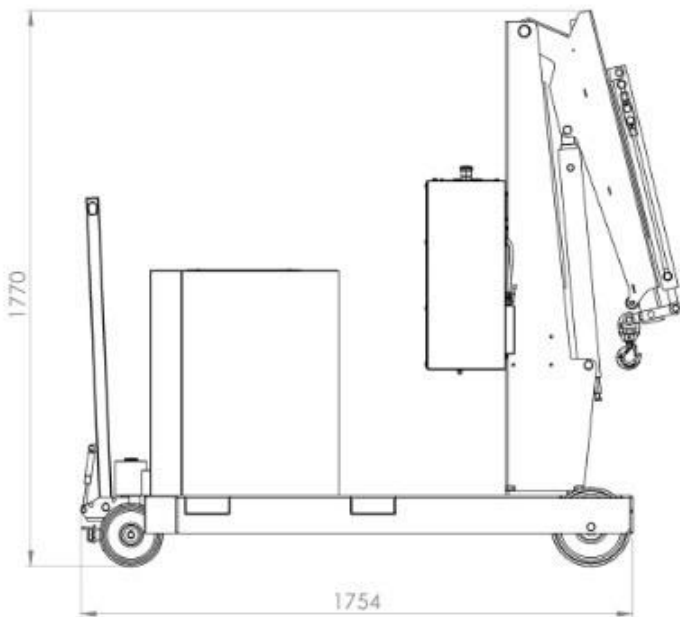
LIFTING CAPACITY 1000 KG

COUNTERBALANCED CRANE WITH RIGID ARM ELECTRIC LIFT /LOWER/EXTEND/RETRACT THROUGH
4-WAY CONTROL LEVERS AT ADJUSTABLE SPEED

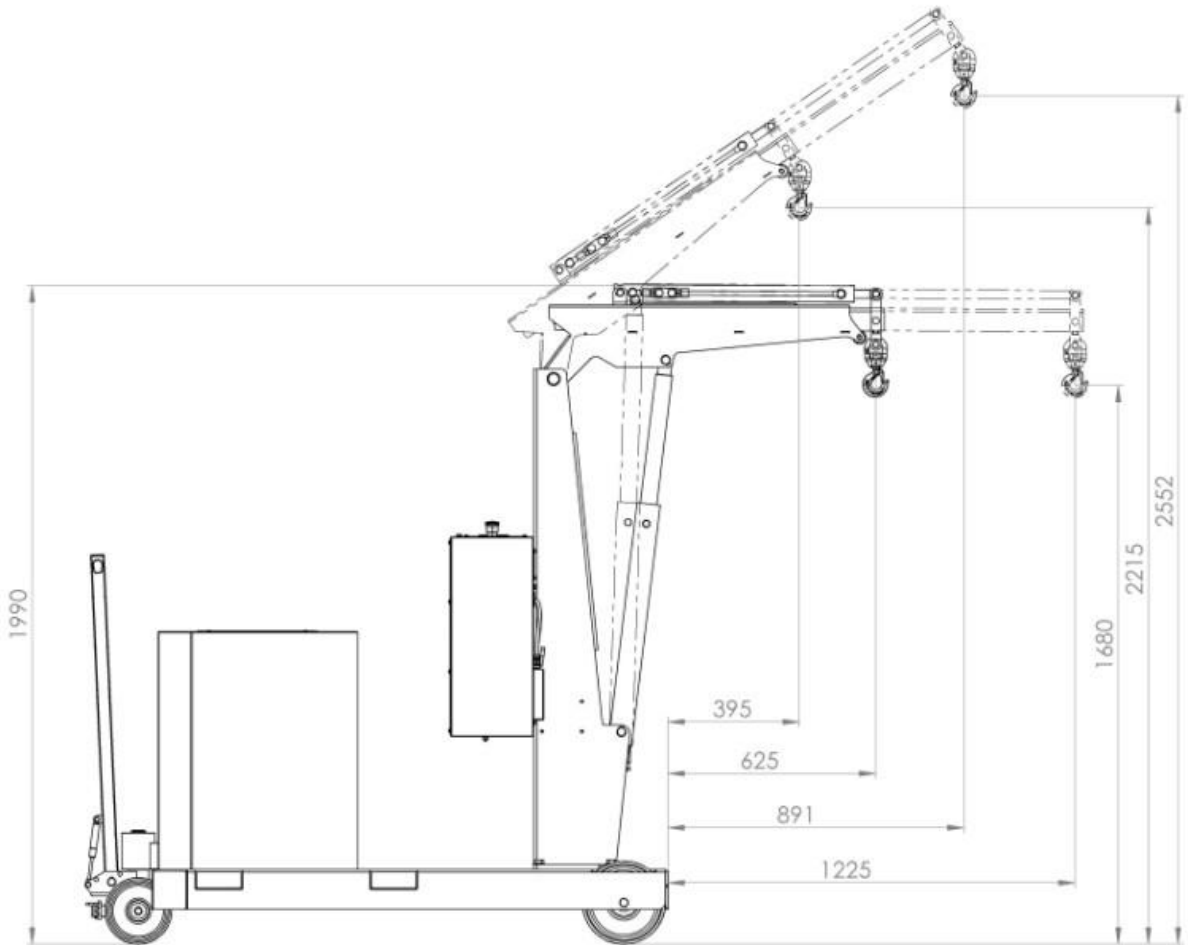


| Model | | GZ1000BSE |
|---|-----------|------------------------------------|
| Drive | | Manual |
| Rotation | | Rigid arm |
| Arm lifting | | Electric – control lever |
| Arm lowering | | Electric – control lever |
| Arm extension | | Electric – control lever |
| Width | mm/inch. | 800 / 31 |
| Max capacity with standard arm | Kg / lbs. | 1000 / 2204 * see load chart below |
| Max capacity with extension PZF_SE | Kg / lbs. | 200 / 440 * see load chart below |
| Weight of the crane (counterweight incl.) | Kg / lbs. | 1195 / 2634 |
| Battery type | | Lead acid |
| Batteries nos. | pcs | 1 |
| Battery voltage / nominal capacity | V / Ah | 12 / 80 |
| Lifting motor | W | - |
| Traction motor | W | - |

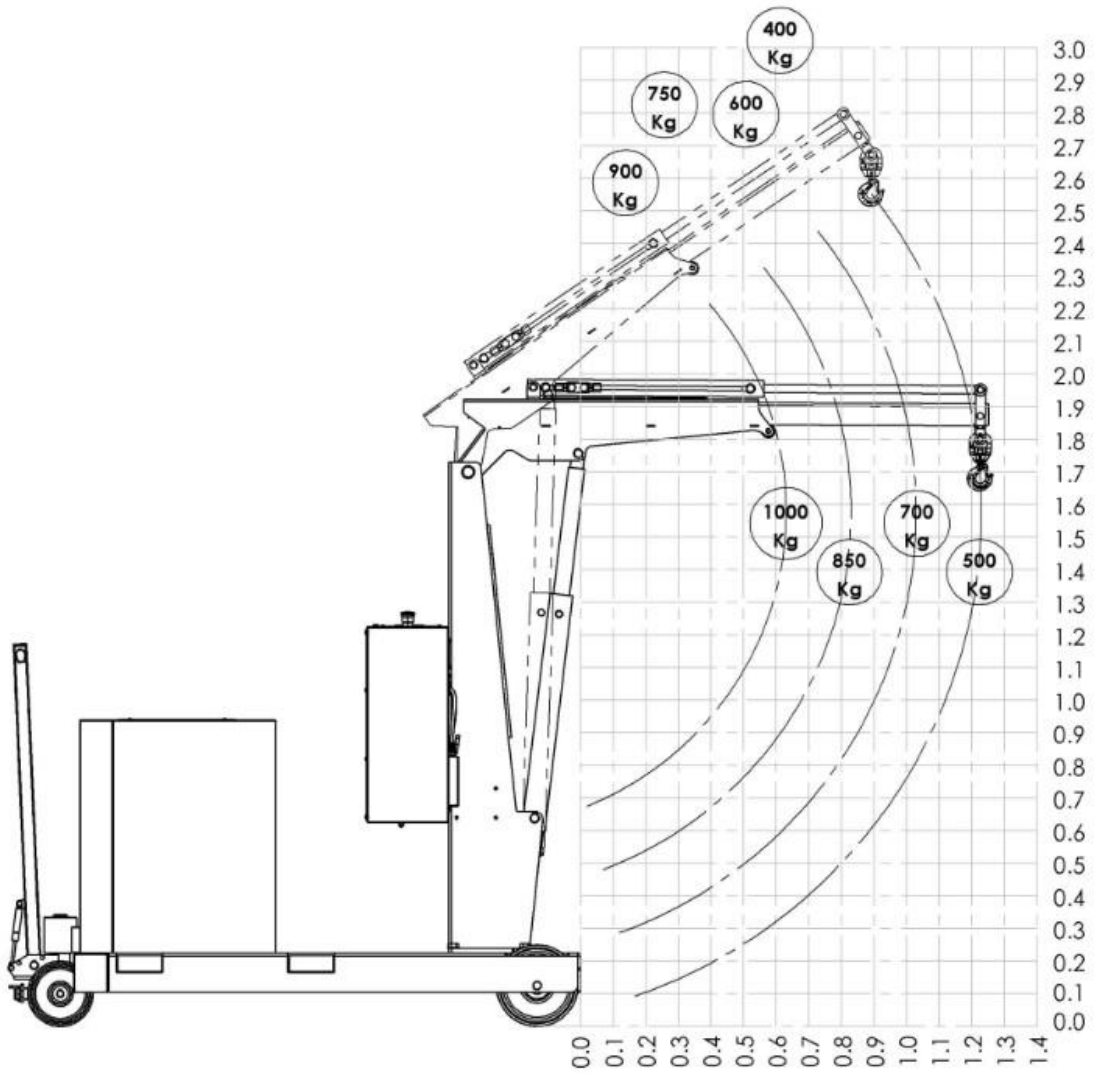
CRANE GZ1000BSE MAIN DIMENSIONS



CRANE GZ1000BSE DETAILED DIMENSIONS WITH STANDARD ARM



CRANE GZ1000BSE LOAD CHART WITH STANDARD ARM



CRANE GZ1000BSE

LOAD CHART WITH OPTIONAL EXTENSION PZF_SE

